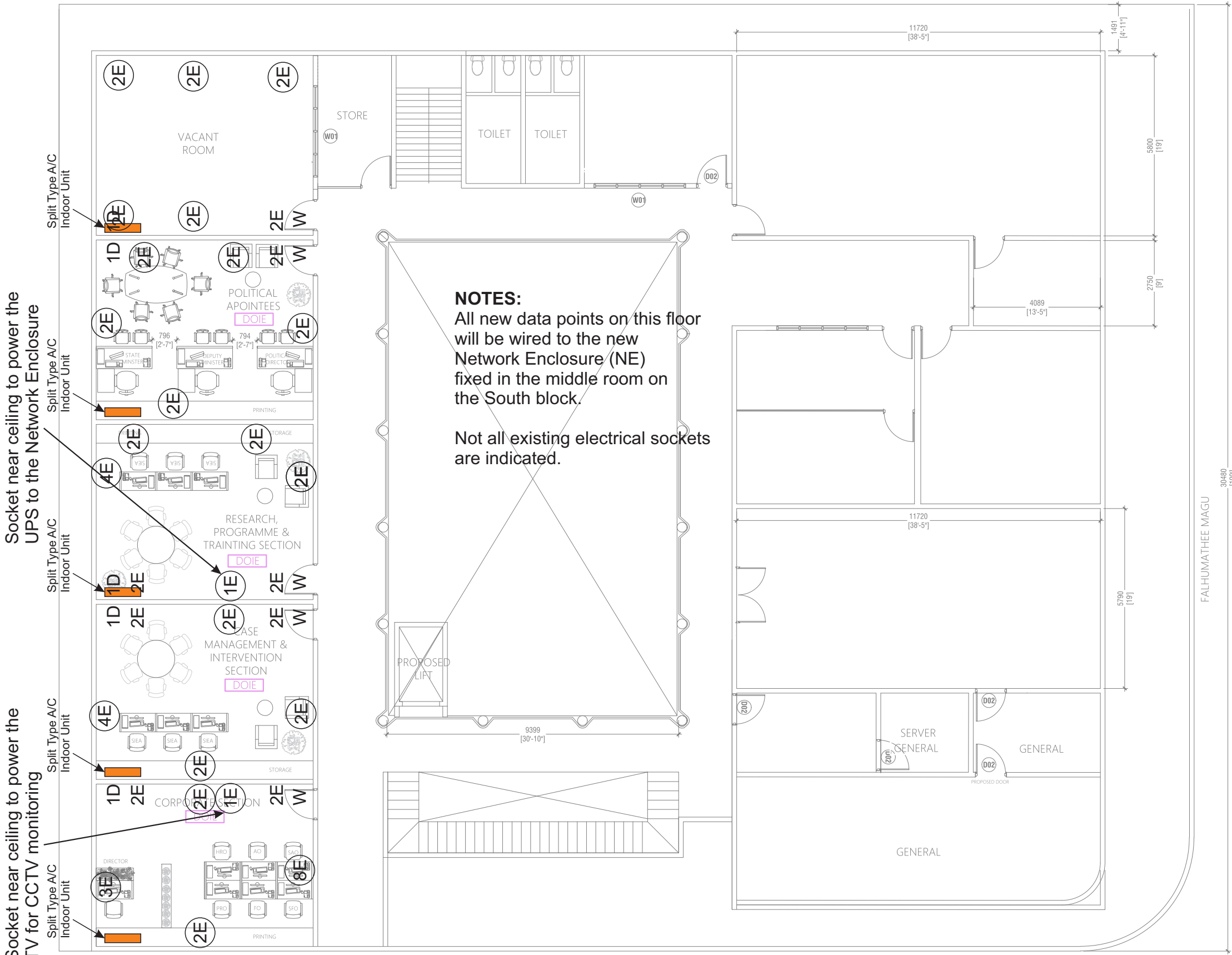


THIRD FLOOR



All new power sockets are to be 13 Amperes, UK or Universal type, to be fixed on the walls, 300mm above finished floor level, except for the power socket for the Network Enclosure which needs to be near the ceiling.

The power socket for the attendance machine on the Ground Floor shall be fixed near the ceiling, with casing fixed down to the height where the attendance machine will be fixed.

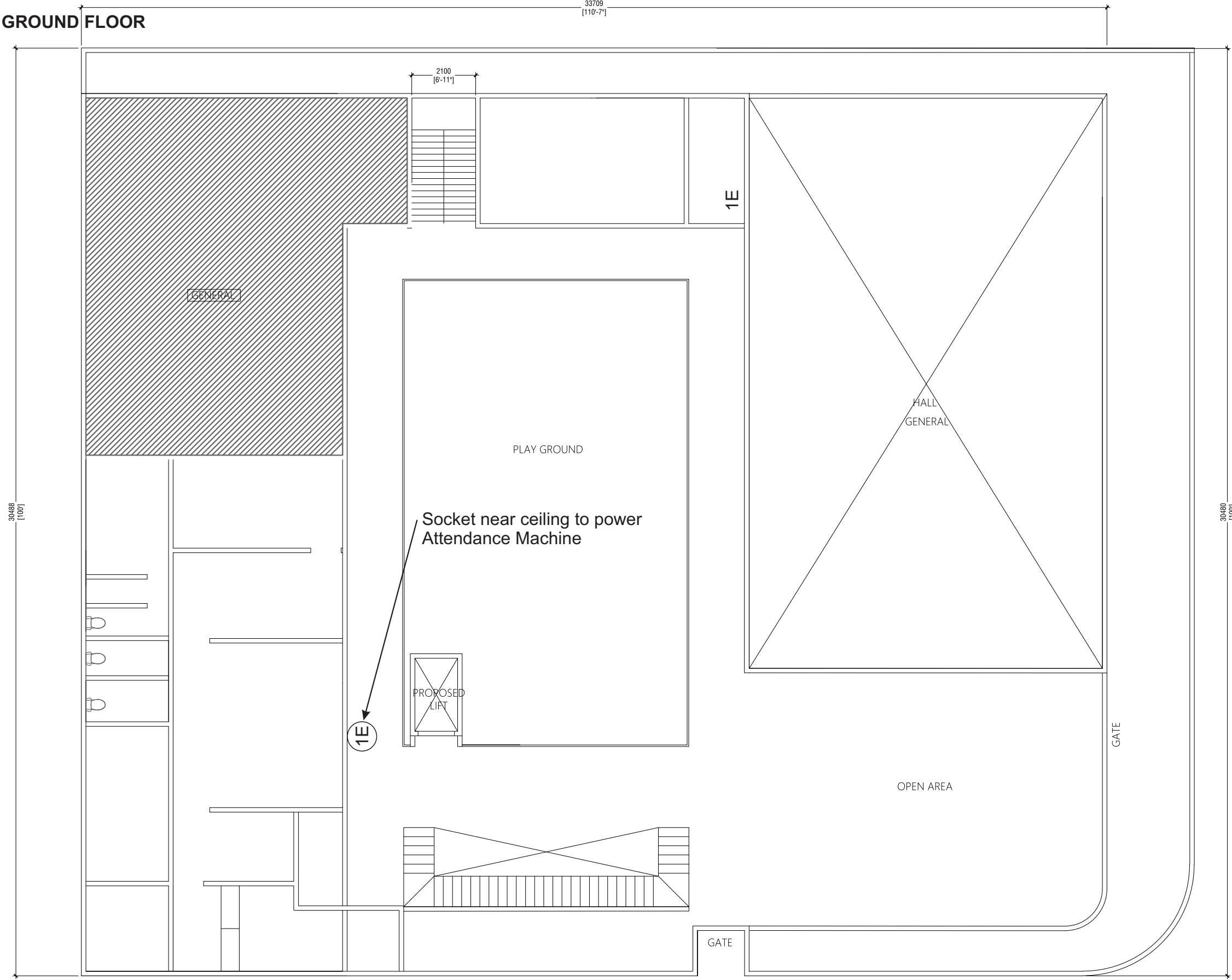
Power sockets and boxes they are fixed on shall be white in colour.

Use Dual Gang or Single Gang power sockets where relevant.

Total new power sockets on Third Floor: 57
Total new power sockets on Ground Floor: 1

x E Electric Socket 13Amperes (New) where x represents quantity.

- D Wired Data Point (Existing) from old Izzudhdheen School Network
- W WiFi Access Point connection point (Existing) from old Izzudhdheen School Network
- NE Network Enclosure (Existing) from old Izzudhdheen Network
- E Electrical (Existing) - Not all existing electrical points are indicated



All new power sockets are to be 13 Amperes, UK or Universal type, to be fixed on the walls, 300mm above finished floor level, except for the power socket for the Network Enclosure which needs to be near the ceiling.


The power socket for the attendance machine on the Ground Floor shall be fixed near the ceiling, with casing fixed down to the height where the attendance machine will be fixed.

Power sockets and boxes they are fixed on shall be white in colour.

Use Dual Gang or Single Gang power sockets where relevant.

Total new power sockets on Third Floor: 57
Total new power sockets on Ground Floor: 1

FALHUMATHEE MAGU

 Electric Socket 13Amperes (New) where *x* represents quantity.

- D Wired Data Point (Existing) from old Izzudhdheen School Network
- W WiFi Access Point connection point (Existing) from old Izzudhdheen School Network
- NE Network Enclosure (Existing) from old Izzudhdheen Network
- E Electrical (Existing) - Not all existing electrical points are indicated